

West Essex Care Home & Dom Care Education & Training

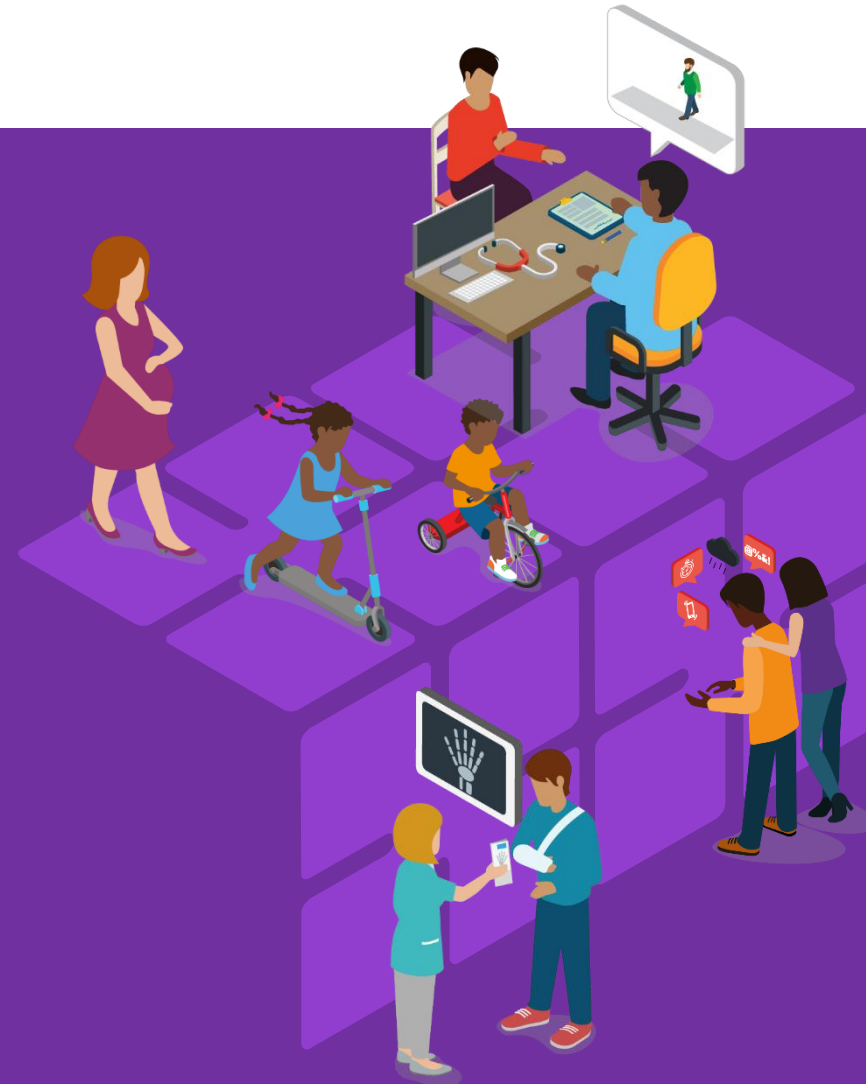
Cathy Mansfield

Senior Transformation Manager – Care Homes, Cancer &
End of Life

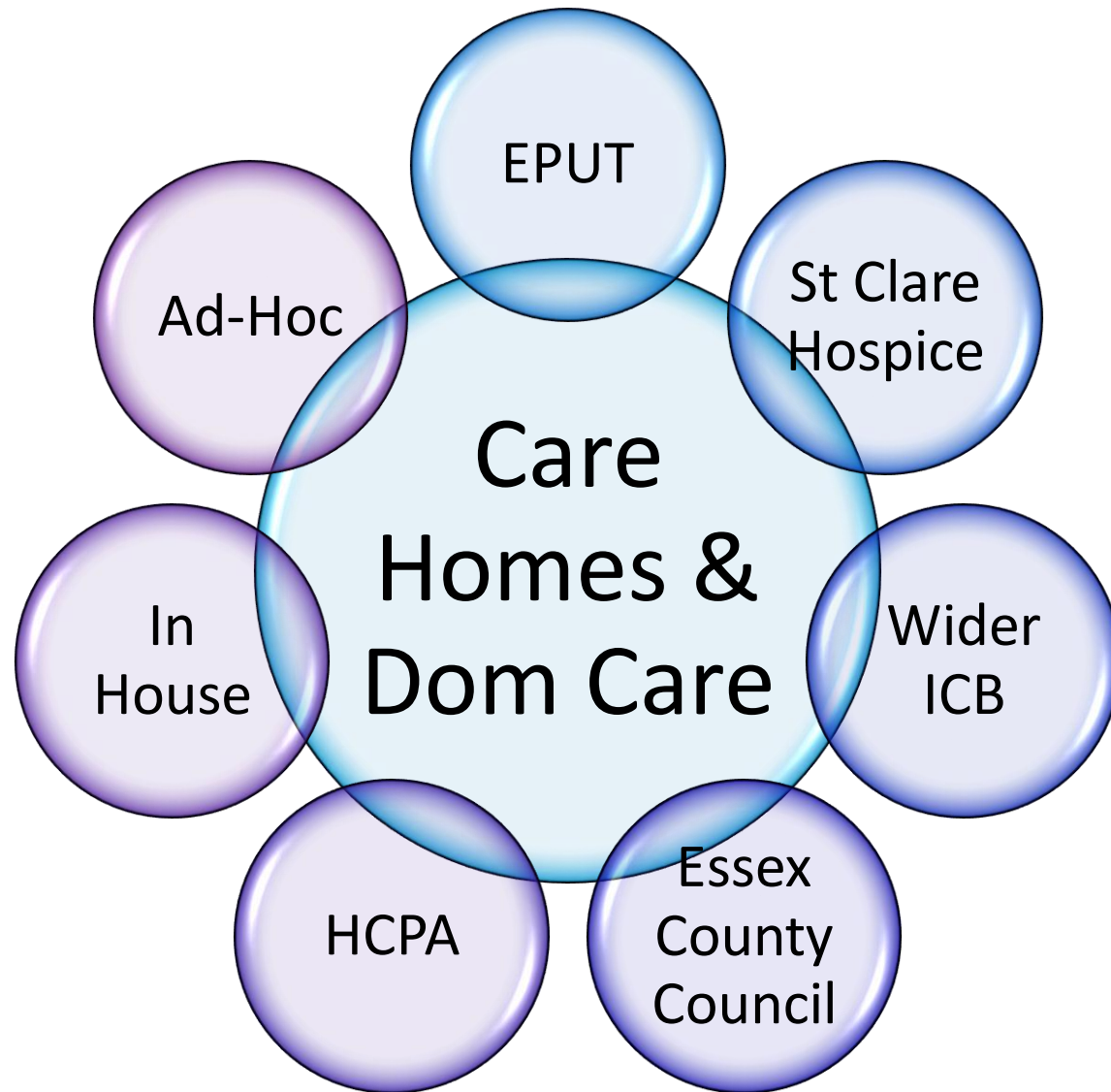
cathy.mansfield1@nhs.net;

October 23

Working together
for a healthier future



West Essex Training Offers



Ad-Hoc Training Feedback :

WHZAN Early Deterioration Monitoring Training provided by These Hands Academy

'The training was excellent. I know we are into cutting down on paper but next time I'll print off the news2 paperwork.'

The fact that you acknowledged that carers know their residents well enough to notice soft signs was real confidence booster.

If possible, I would like to arrange more training for some of our very new recruits'



Our Offer....

- What education and training is available?
- Are we getting our education and training offer right?
- Costs associated with some training offers to Providers – does this deter?
- Do we have a strong offer in both our Care/Nursing/LD Homes/Dom Care?
- What is preferred? Face to Face, virtual, on the ground
- How does staff turnover impact on training?
- Duplicated training?
- How do we communicate our training offer?
- How do we evaluate?

Next Steps....

- Collaborative meeting to discuss education and training – but noting, that this can not be an isolated piece of work i.e. frailty and dementia
- Review our system wide priorities
- Understand the gaps
- Refresh our offer
- Launch comms, training and contact details

