



# Essex County Council Fully Funded PBS Training on: **Functional Assessment and PBS Equipped (Practicing PBS)**

## 2024 Course Dates:

Tuesday 10th & Wednesday 11th September - Functional Behaviour  
Assessment Day 1 & 2  
Wednesday 25th September Equipped Day 1  
Wednesday 16th October Equipped Day 2  
Wednesday 6th November Equipped Day 3  
Wednesday 27th November Equipped Day 4

## Venue:

Hampton Sports and Leisure,  
Chelmsford, CM2 9FH

## Times:

9:30am - 4:30pm

**ALL dates for the course must be attended to pass the course. Please ensure to read the course  
FAQ's before signing up.**

This training supports you to embed PBS in practice by developing:



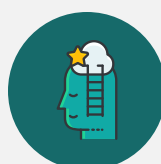
A greater understanding of  
functional assessments  
and their importance



Traffic light plan



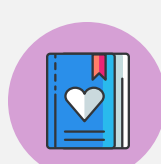
A quality of life profile and  
action plan



Skills development  
plan



Environmental based  
strategies



A useful handbook for  
you to keep

Spaces are limited and will be allocated on a first come first served basis.  
To be eligible you must have passed the PBS Informed course.

PBS Informed Dates: Wednesday 12th June and Wednesday 31st July 2024

[www.supportingpositively.com](http://www.supportingpositively.com)