

Dementia Accreditation



Dementia Accreditation Background

The Dementia Services Development Centre (DSDC) at the University of Sterling has an international reputation for promoting best practice in design for people with dementia.

Having reviewed the criteria we aspired to receive a GOLD accreditation.

Levels of Certification

- GOLD: 90% or above – an excellent example of design for people with dementia
- SILVER: 75-89% - a good example of design for people with dementia
- BRONZE: 60-74% - an adequate example of design for people with dementia

Achievements

Started to use the audit tool in 2020 at Charles Dickens Court in Chelmsford
Received GOLD accreditation for CDC in March 2021

Marylands pre assessment Jan 2022

Final audit January 2023 – Face to face assessment with 2 auditors.

Received GOLD accreditation for Marylands in April 2023

Although we have no active assessments taking place at present, ECL have committed to apply the standards in every Older People service to ensure consistency in all our environments.

Standards

There are many standards that buildings have to comply with. The DSDC audit tool assumes that an effective model of care is already in place and assumes that the environment will:

- Support positive engagement of the person with dementia
- Be age and culturally appropriate
- Be sensitive to a range of ethnic groups
- Support people with dementia to have as much independence and control over their lives as possible

To prepare for the assessments we ensured that all the essential elements for the environment included:

Internal considerations

- The colour of carpet/flooring contrasts with colour of the furniture and the walls
- The skirting contrasts both the floor and walls
- The flooring is consistent throughout including threshold strips

We ensured that our dining rooms were domestic in appearance, The seating was suitable for those with dementia (with arms) and that there was enough seating for both customers and staff supporting at mealtimes.

Bathroom doors were different in colour and contrasted with the adjacent walls, there is clear signage in place to aid wayfinding and is domestic in appearance where possible (adding items such as shampoo and conditioner and hand towels.) The room is homely and smells pleasant. Toilet seats contrast with the colour of the toilet bowl and flooring. Domestic style toilet roll holders which are in easy reach of the toilet.

External considerations

For external areas we ensured that access is visible and well sign posted, the door threshold is level and wide enough for wheelchair users and that there was a colour contrast between the interior floor finish and exterior surfacing.

The areas we also had to consider included:

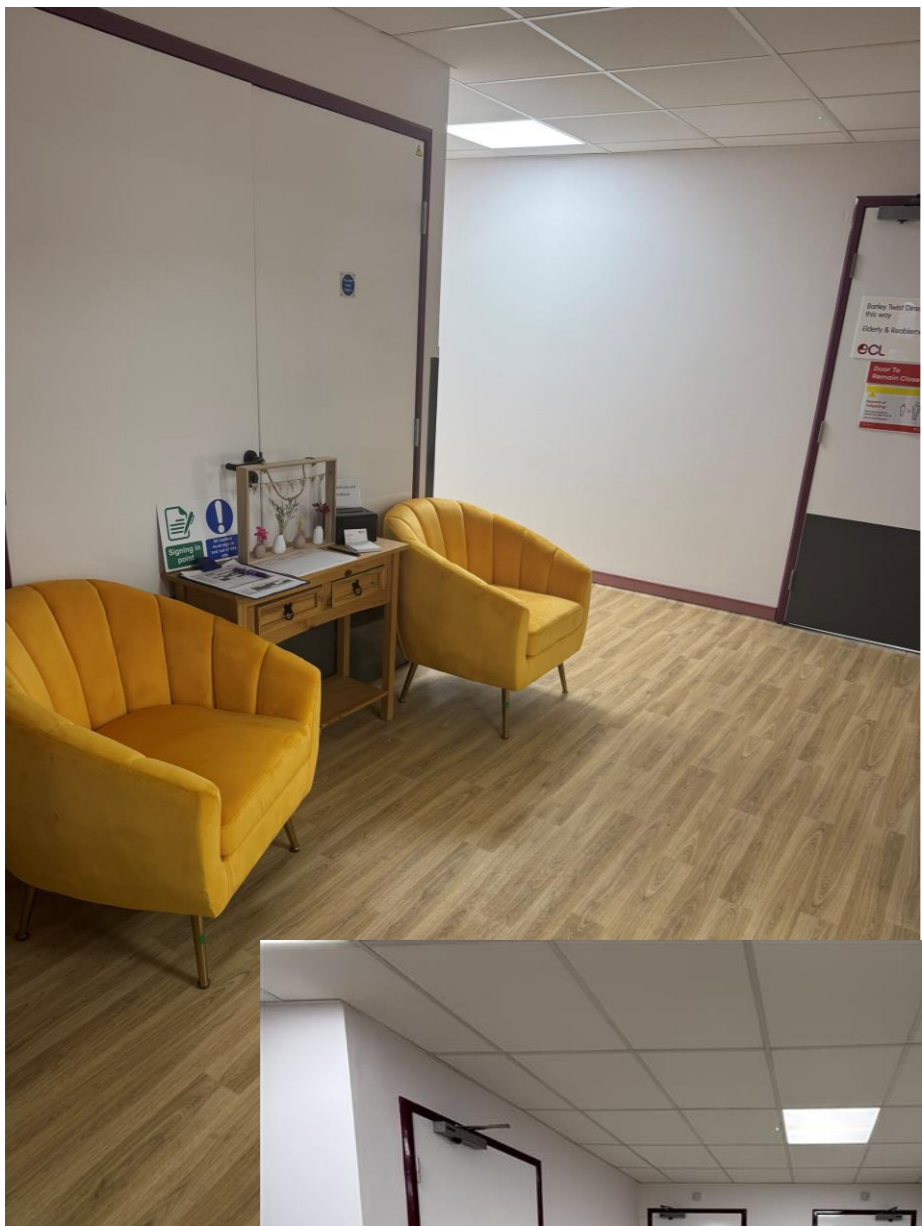
- Where there are slopes, handrails are available
- There are landmarks to help identify the door, sculptures, plants etc
- Door handles are easy to use and recognisable and contrast against the door
- External space is enclosed and is difficult or impossible to climb
- Barrier planting in place to deter access
- Hard servicing is level and non slip and raised edges so not create a trip hazard
- Seating and furniture available and stable with a contrast colour to the ground surface
- Plants are not harmful

Basildon Older People Service

Our recent full refurbishment of our Basildon Older People Service has been a huge success and all elements of the DSDC audit tool was included in the new design.

Here are some photos of the new environment.





| **Any Questions?**

*Thank
you!*



Person-centred care