



**Social  
Value**

**Festival**

#EssexSocialValue

**Day 1: Introduction to Social Value  
and ECC Social Value Priorities**

Monday 19 July • 1 – 3pm



Essex County Council



# Social Value Festival

#EssexSocialValue

## Breakout session 2 - Social Value and the Climate



Essex County Council



# Samantha Kennedy

Director for Environment & Climate Action  
Essex County Council

# Essex Climate Action

**Samantha Kennedy**  
**Director Environment & Climate Action**

<https://www.essex.gov.uk/climate-action>

[Interim Report](#)



Essex County Council

# Climate Challenge

## UK Domestic Green House Gas Emissions (GHG) by Sector 2019

Source: BEIS, HMG



Others include Public, Industrial Processes and the Land Use, Land Use Change and Forestry (LULUCF) sectors. The percentages may not sum to 100% due to rounding.

[Final UK greenhouse gas emissions national statistics: 1990 to 2019 - GOV.UK \(www.gov.uk\)](https://www.gov.uk/government/statistics/final-uk-greenhouse-gas-emissions-national-statistics-1990-to-2019)

**We are legally required to achieve net zero green house gas emissions by 2050. Government agreed milestone of 78% reduction by 2035.**

Transport is the largest contributor of green house gases in the UK, but is an even larger share of Essex emissions.

Our built environment is in line with the national average. As we do not host a heavy industrial sector, the contribution of our business sector is below the national average.

In 2019, UK territorial greenhouse gas emissions fell by 3% from 2018 and were 44% lower than in 1990



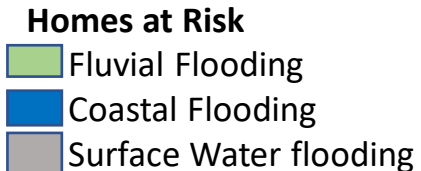
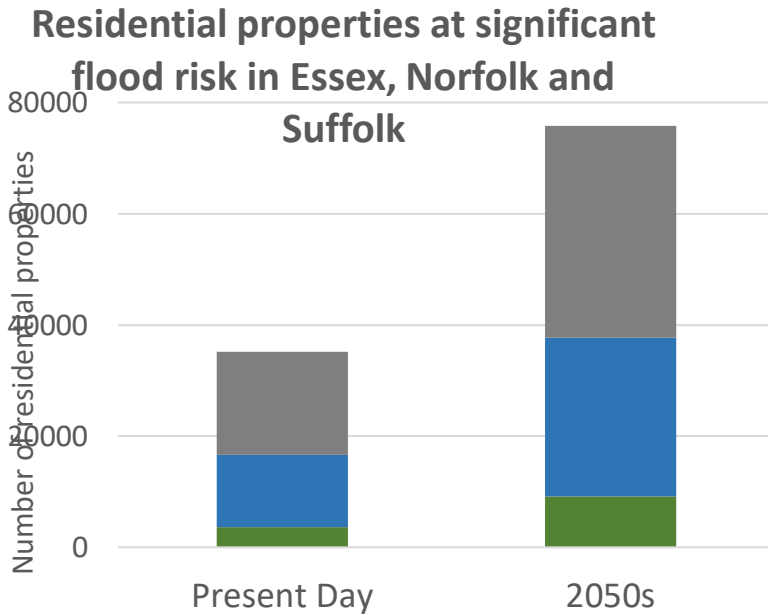
## WORLD ECONOMIC FORUM – GLOBAL RISK REPORT 2020 “A PLANETARY EMERGENCY”

- Failure to act on Climate Change and associated impacts are the single biggest risk facing the World.
- Progress Report to Parliament, Committee on Climate Change, June 2020
- “We are not making adequate progress in preparing for climate change”
- The fundamental requirements to achieve Net Zero are largely unchanged by COVID-19: infrastructure investments and reskilling of workers – both of which can help the UK to recover from the COVID-19 crisis





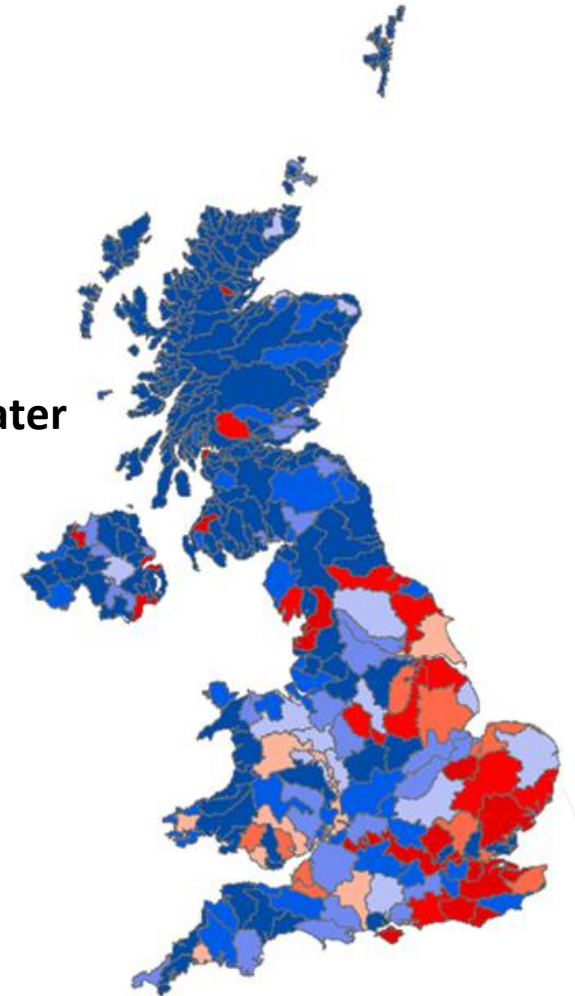
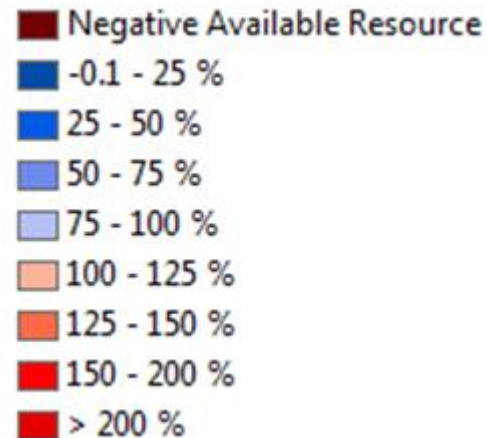
# FUTURE IMPACTS: INCREASED FLOOD RISK, WATER SHORTAGES, OVERHEATING



The Environment Agency estimate that for every £1 spent improving protection from flooding and coastal erosion, we avoid around £5 of property damages

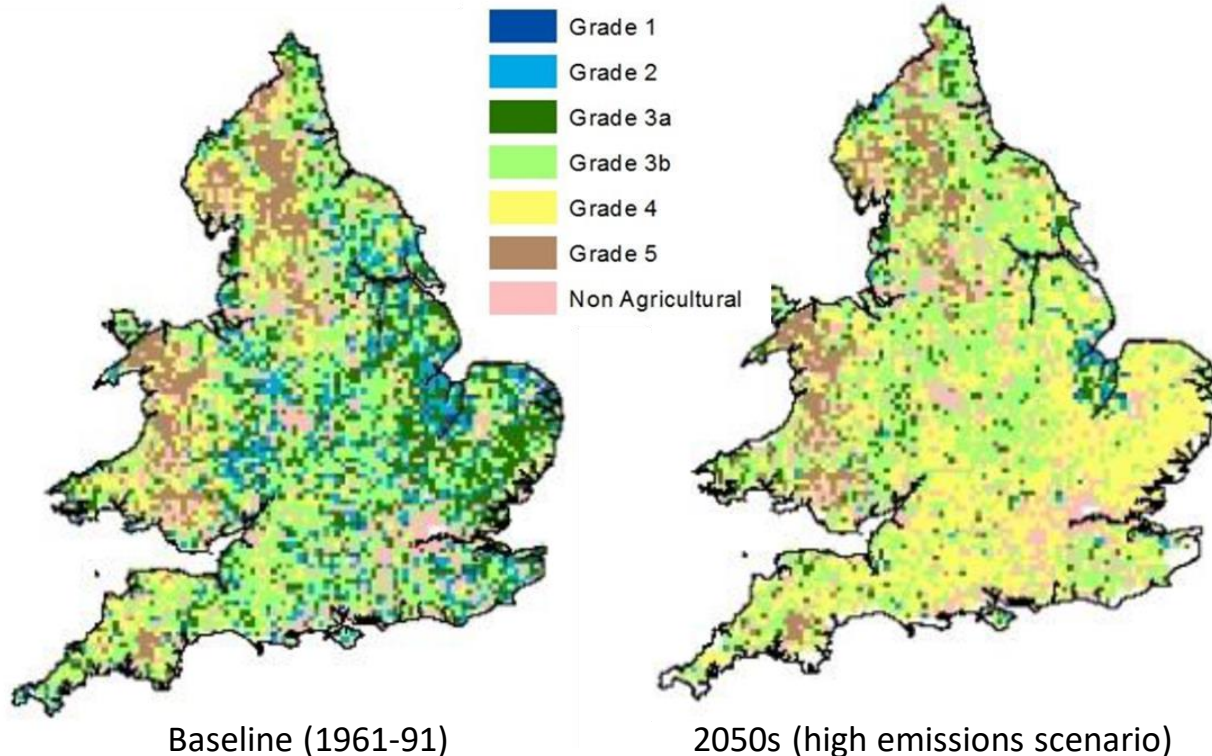
Essex also has substantial issues with water scarcity and is one of the areas of the country with the highest levels of negative available water resource as a % of water available for abstraction in the country.

## Water demand as a % of water available for abstraction



# FUTURE IMPACTS – AGRICULTURE AND SOILS

## AGRICULTURAL LAND CLASSIFICATION IN ENGLAND AND WALES



### Agriculture

Climate change will cause soil erosion – soil washed away in heavy rainfall in winter and blown away in drier summers - leading to degradation of our agricultural land and impacting our farming economy.

### Subsidence Risk for Buildings & Roads

Climate change leading to hotter, drier summers, shrinks and cracks ground under houses.

British Geological Survey reports risks of clay related subsidence increases by a third by 2030 and triples by 2050.

This means the 1m homes at risk in the UK in 1990 is set to rise to 2.4m by 2030.

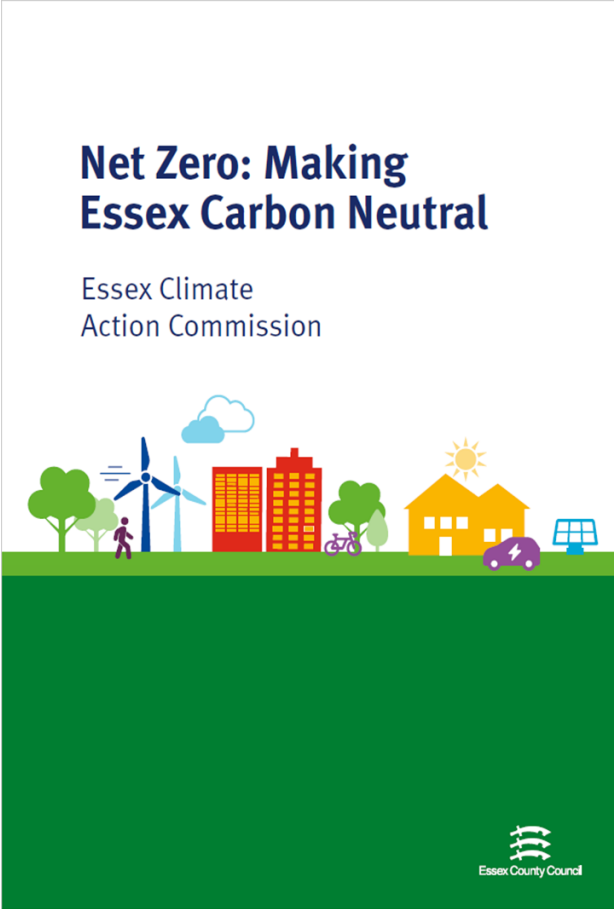
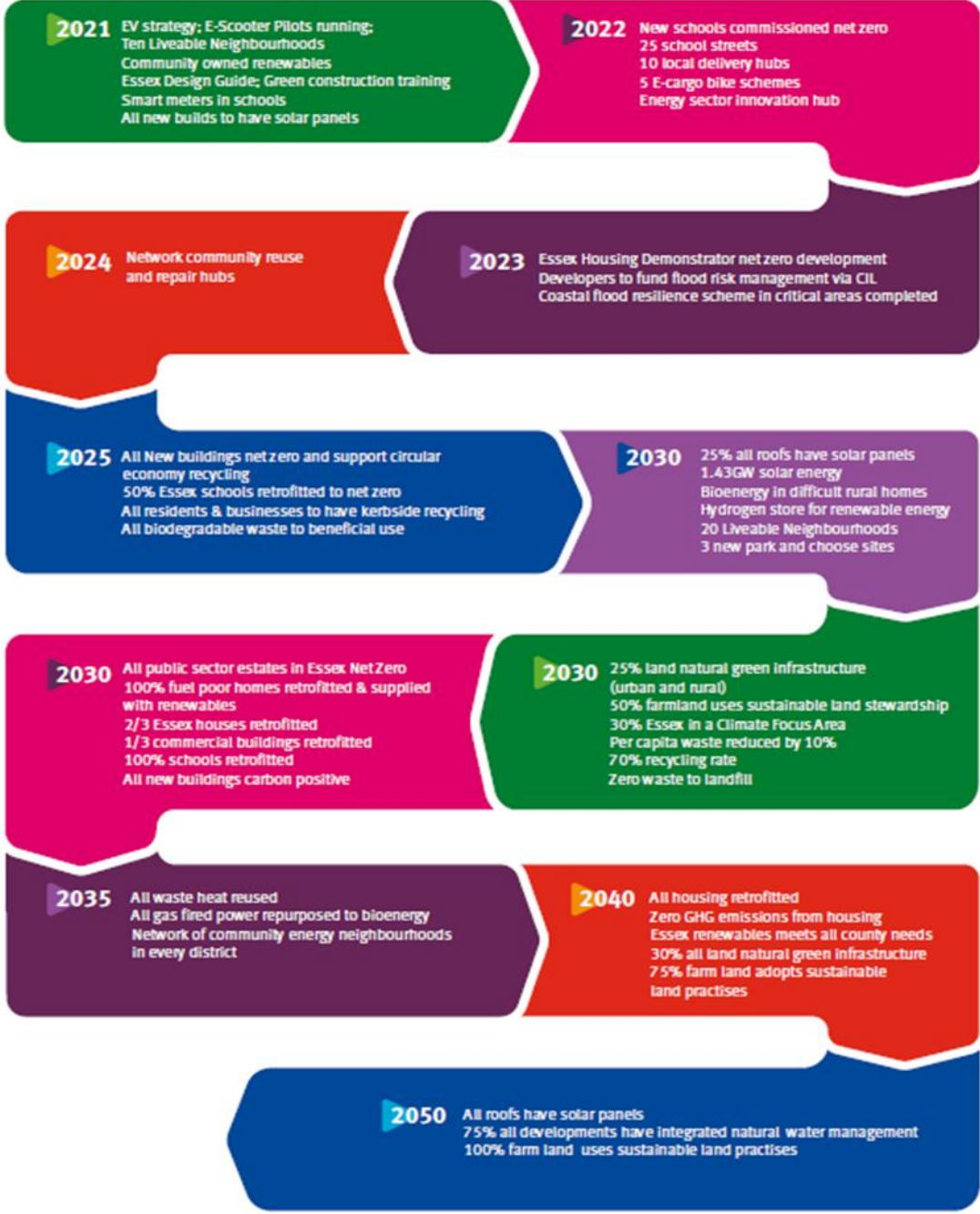
Essex is one of the key areas that will be affected.



# Essex Climate Action Commission

- Cross-party
- Brings together experts from Academia, Climate Scientists, the Public Sector and Business Leaders e.g. UN Chief Scientific Adviser, senior academics from all 3 Essex Universities, representatives from major businesses, charities and trade associations.
- Appointed Independent Chair – Lord Randall of Uxbridge
  - Identified for his significant experience in both national government and the private sector.
  - Life peer in the House of Lords.
  - Was Special Advisor on the Environment to the former Prime Minister, Theresa May
  - served as a trustee of the RSPB
  - special envoy on modern slavery to the Mayor of London
  - member of the Environment, Transport and Regional Affairs Select Committee
- Appointed two Young Essex Assembly members to the Commission as co-chairs
- Chair of Place Scrutiny to be an official Observer at meetings of the Commission

# Net Zero: Making Essex Carbon Neutral



Essex Climate Action Commission  
**Powering positive change**



# Green Growth Opportunities

## Construction In Essex

- 200,000 new homes & 40+ schools,
- Retrofit c800,000 existing homes of which 70% are EPC D or below
- 67,000 homes in fuel poverty

Construction contributed £117 billion to the UK economy in 2018 and supports over two million jobs.

**Green construction expected to create 1.8m new jobs of which 0.5m in Wider South East.**

## Energy Transition

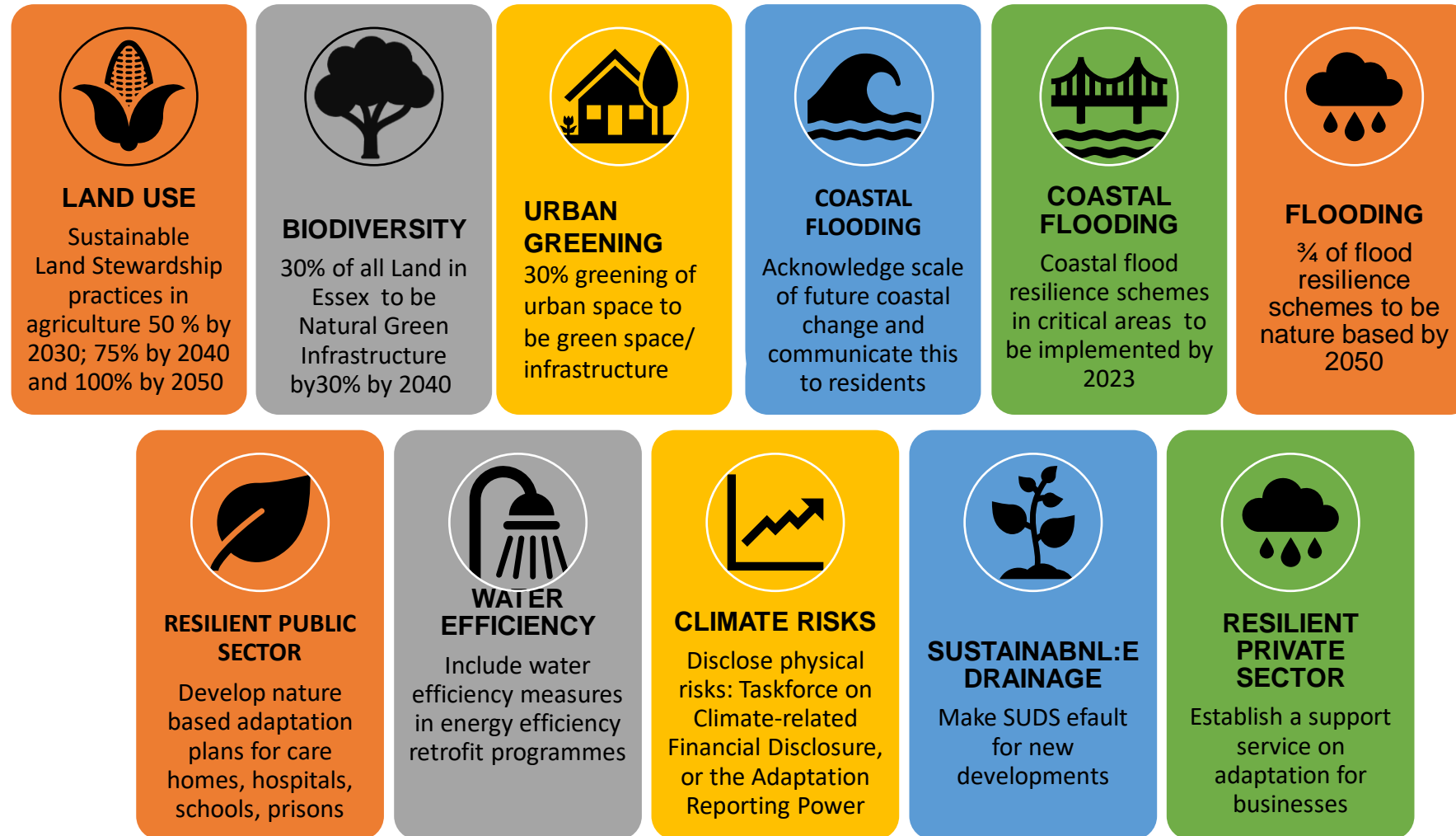
In 2018 there were 185,000 full-time workers in England's low-carbon and renewable energy economy (ONS).

LGA forecast that in 2030 across England there could be as many as 694,000 direct jobs employed in the low-carbon and renewable energy economy, rising to over 1.18 million by 2050.

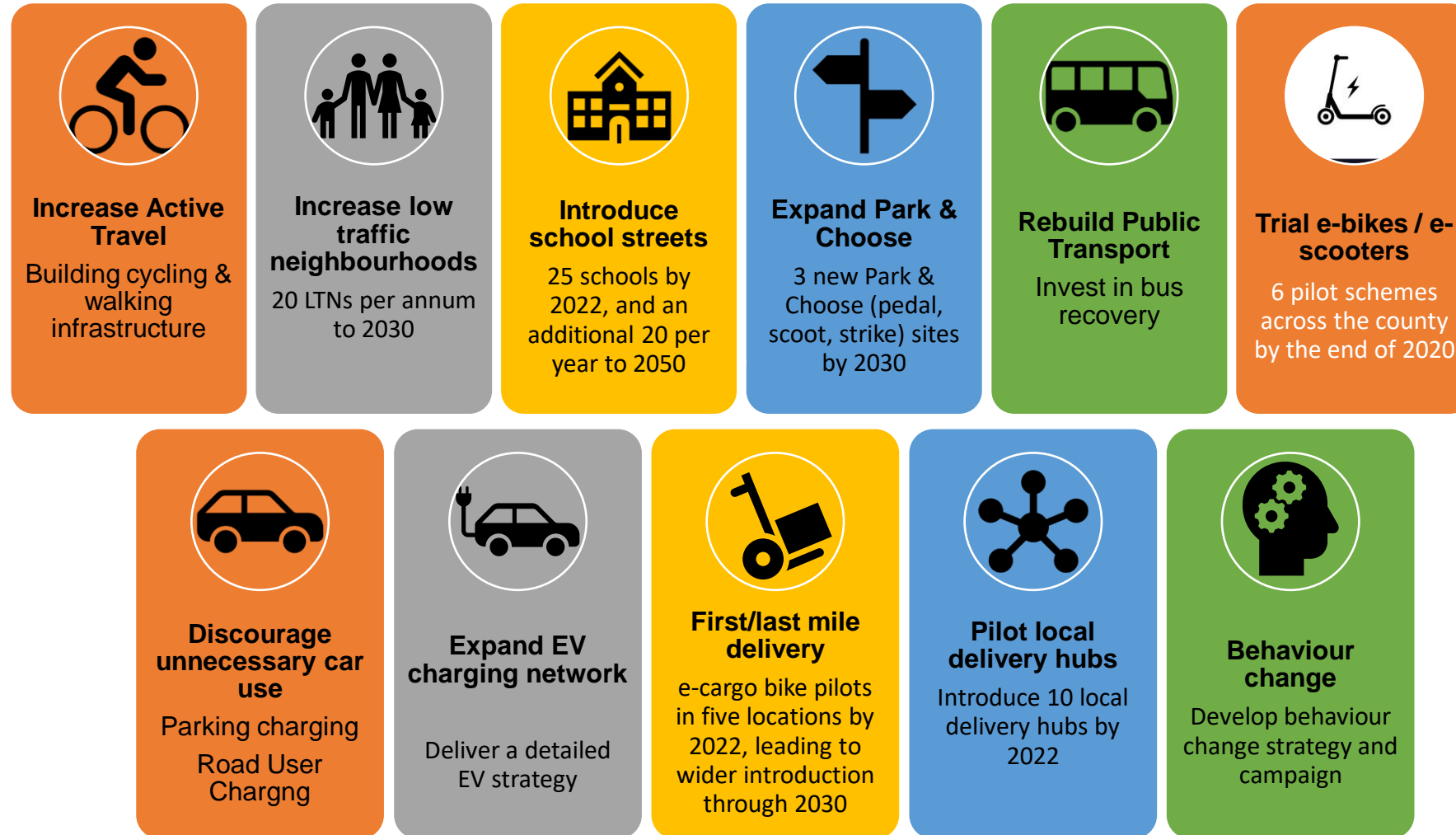
**In Essex it is estimated that 15,908 jobs will be required by 2030 and 27,741 by 2050.**

# CLIMATE COMMISSION

## LAND USE, GREEN INFRASTRUCTURE, RESILIENCE



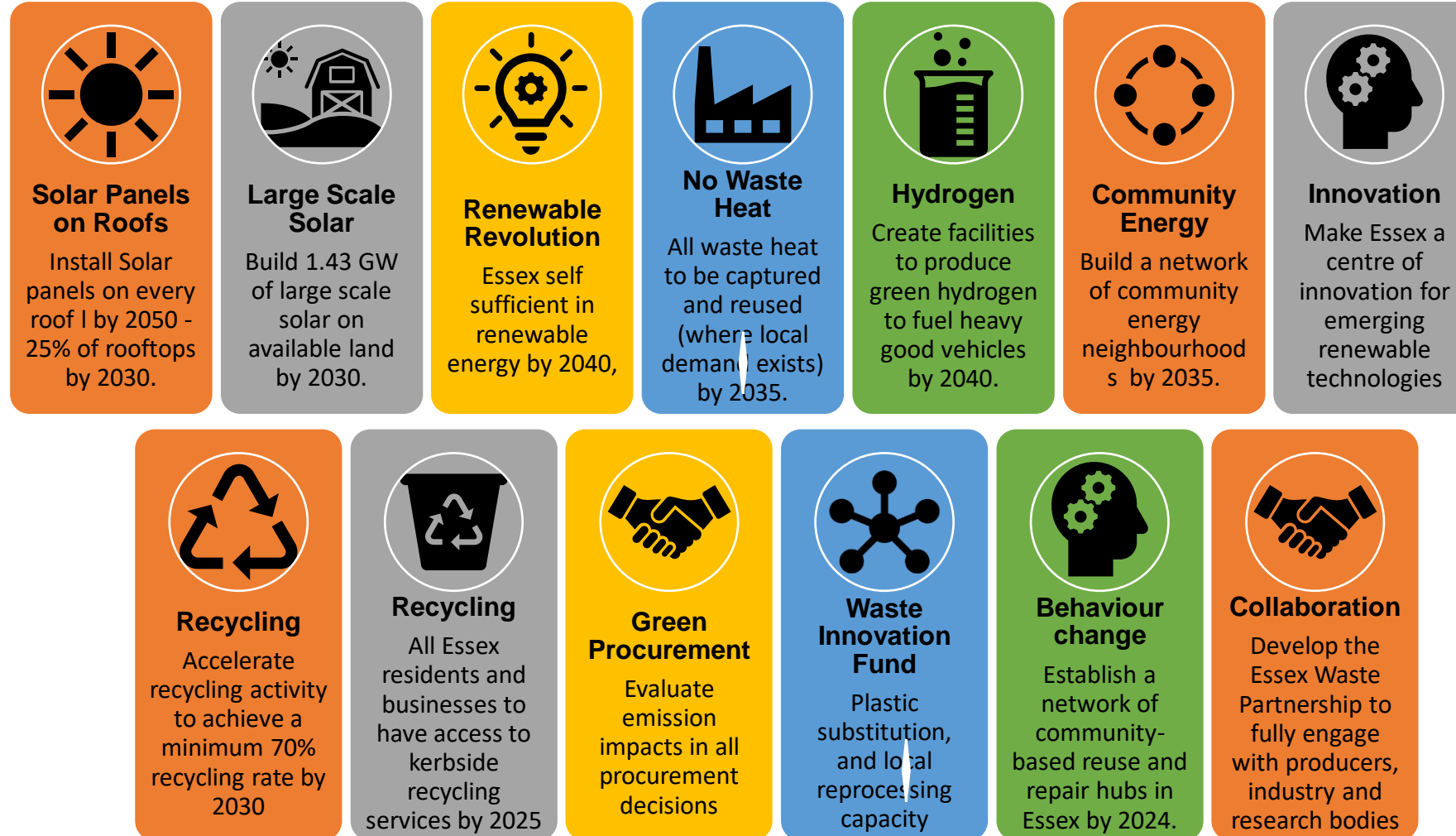
# CLIMATE COMMISSION TRANSPORT



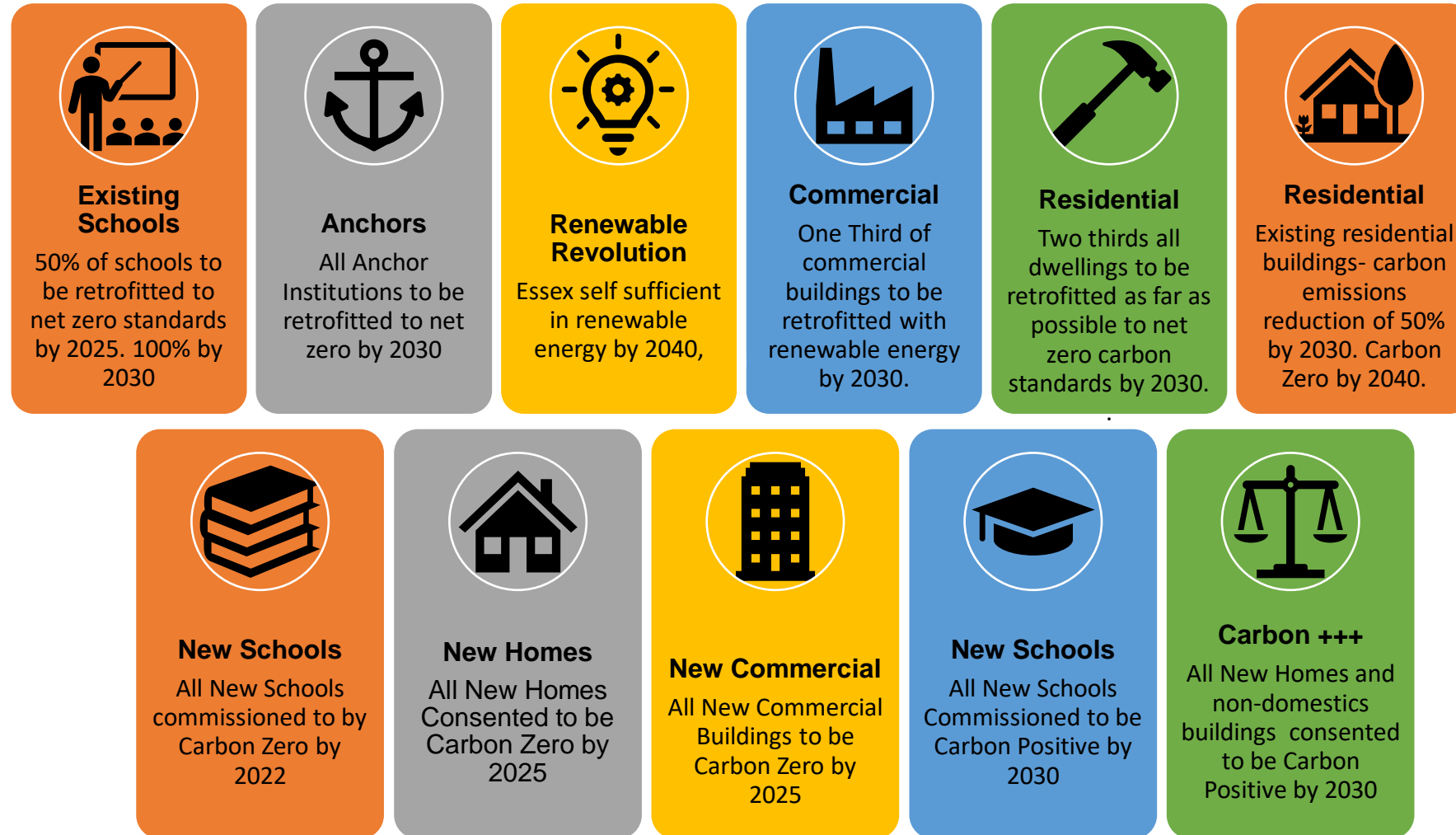


# CLIMATE COMMISSION

## ENERGY & WASTE



# CLIMATE COMMISSION BUILT ENVIRONMENT



---

# ESSEX BUSINESSES



Partnership with University and Businesses



Outline scope for green business opportunity



Provide comprehensive support to businesses so they can make the right choices..



Establish Essex as a centre of excellence for innovation in addressing the climate crisis.



Support for Essex SME to invest in energy efficiency and renewables climate resilience



A climate recognition scheme for businesses should be developed in recognition of climate action taken.



# ECC SUPPORTING GREEN GROWTH



Over the course of three facilitated workshops in 2021, ECC is working to create the partnerships and appetite for innovation in Essex focussed on achieving carbon zero outcomes for the County.

**The three sessions will focus on bringing together to:**



Build the foundations



Enable project delivery



Report, evaluate, disseminate next steps

The most recent workshop held on **7th July** focused on bringing forward project concepts to tackle the four key themes that have been identified.

These themes are *Waste, Transport, Built Environment & Energy*

## ECC's New Sector Development Strategy

- The Sector Development Strategy is part of the county's economic recovery programme
- The strategy will set out the economic sectors that Essex should focus on supporting and growing
- The strategy will make recommendations on investment and actions that will deliver real, tangible results for Essex
- The strategy will drive the direction of our wider work across the authority and in our collaboration with our partners

The interim report was announced at Full Council on **13th July** and final report is due at the end of Sept 2021. This will set out an action plan for ECC to take forward.



**Social  
Value  
Festival**



**Thank you for joining us!**

**Follow #EssexSocialValue**



**Essex County Council**





**For more information:**

**Visit the Social Value Catalogue at <https://www.livingwellessex.org/social-value/>**

**Contact the team at [Social.Value@essex.gov.uk](mailto:Social.Value@essex.gov.uk)**



Essex County Council