

Winter 2024-5 and Commissioner update



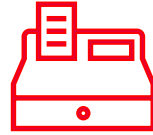
Winter approach

Principles and schemes

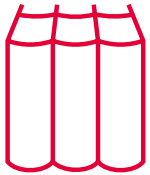
Progress to date



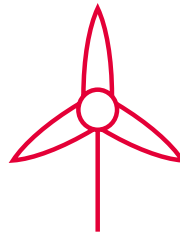
Discussions held locally to review and plan. These have taken place over the period since April and have included ECC Directors and joint post holders



Approach to funding has enabled some continuity. A number of local and countywide initiatives build on things that are already in place.



Learning from last winter and previous years informs us. Sheer number of parallel schemes impacts on ability to evaluate success.



Our plans reflect the changed dynamics in social care markets. Domiciliary care workforce position is improved. Pressure is on availability of the right service on discharge.



Principles of approach agreed. Recognise that there will be local needs and necessary variation; however, some principles can be applied across our planning.



The approach goes beyond funding 'schemes'; it includes process improvement. An example of this is the continued roll out of the Reablement Matrix which supports better use of capacity we have in place.

Principles of approach

Our preparatory workshops have identified principles of approach based on the learning from previous years. The intention for these was to act as a point of reference to assess proposals as they came forward. The principles agreed were:

Principles of approach – Winter 24-25

- To comply with the guidance around funding sources
- Do not further complicate systems – build on what's already there with a focus on 'home first'
- Bring providers into the planning conversations where possible
- Work collaboratively across Health and Social Care to support design, implementations and visibility of our initiatives
- To explore admission avoidance solutions where funding source guidance allows
- Focus on fewer but larger interventions, which will support clearer evaluation of impact
- Where possible, build in the ability for provision to flex for demand
- Ensure good data collection and systemic sharing of insight



Countywide capabilities

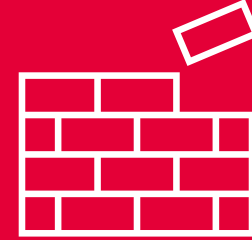
Principles and schemes

Countywide initiatives

A number of schemes and initiatives cover a countywide footprint. In establishing these, or continuing to fund them from the previous year, we are informed on where pressures have been, or are likely to occur, over winter.

Key schemes and initiatives are:

- Recovery to Home beds (care home premium and void cover)
- Dementia Discharge Support
- Funding allocated for 'spot' reablement demand
- Implementation of reablement matrix
- Let contracts with easy 'expansion and change' capability – Additional Reablement Capacity (ARC) and ECL.



60% ECC Discharge Fund allocation dedicated to centrally managed initiatives.
A number of these build on existing work and schemes.

Local schemes

North Essex

Approved schemes using BCF and Discharge Fund:

- Home to Assess 2024-25
- D2A support
- Stepping Stone Homes
- Neighbourhood funding for 24-25 and 25-25
- Enabling Therapies
- VCSE Discharge Support (including transport services and social prescribing)

Great Tey Short Stay Ward

- This will provide 22 beds for people who are medically optimised.
- The ward will be stood up in January 2025 to support demand until March, in collaboration with system partners.

Commissioning update

Key highlights and updates:



New procurement regulations delayed. This will impact on timelines and approach for Live at Home (domiciliary care) in particular.



Advocacy. We have recently recommissioned the all-age, all-specialism advocacy service for Essex. This went live in July. The new provider is Voiceability.



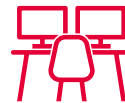
Live at Home. Due to delay to new procurement regulations, some workshops scheduled with suppliers for October have been postponed. Our long-term aim remains to improve interface with home care and other services including NHS neighbourhoods



Supported Living (AWD). The procurement for the new framework has entered stage 2 of the tender, with a start date for the new service in April 2025. This framework will increase the quality of care and simplify contract process for providers and ECC.



Care Homes (IRN framework). A decision for re-procurement of the IRN framework is due to ECC cabinet in December. NHS partners have been engaged with this work and as part of this we are also looking to sharpen our approach to quality assessment.



Supported Employment. For Mental Health Supported Employment (IPS), we are due to go out to tender for new contracts to be in place in April 2025. We are also exploring work-ready support for young people up to the age of 25 to support them to achieve employment related outcomes.