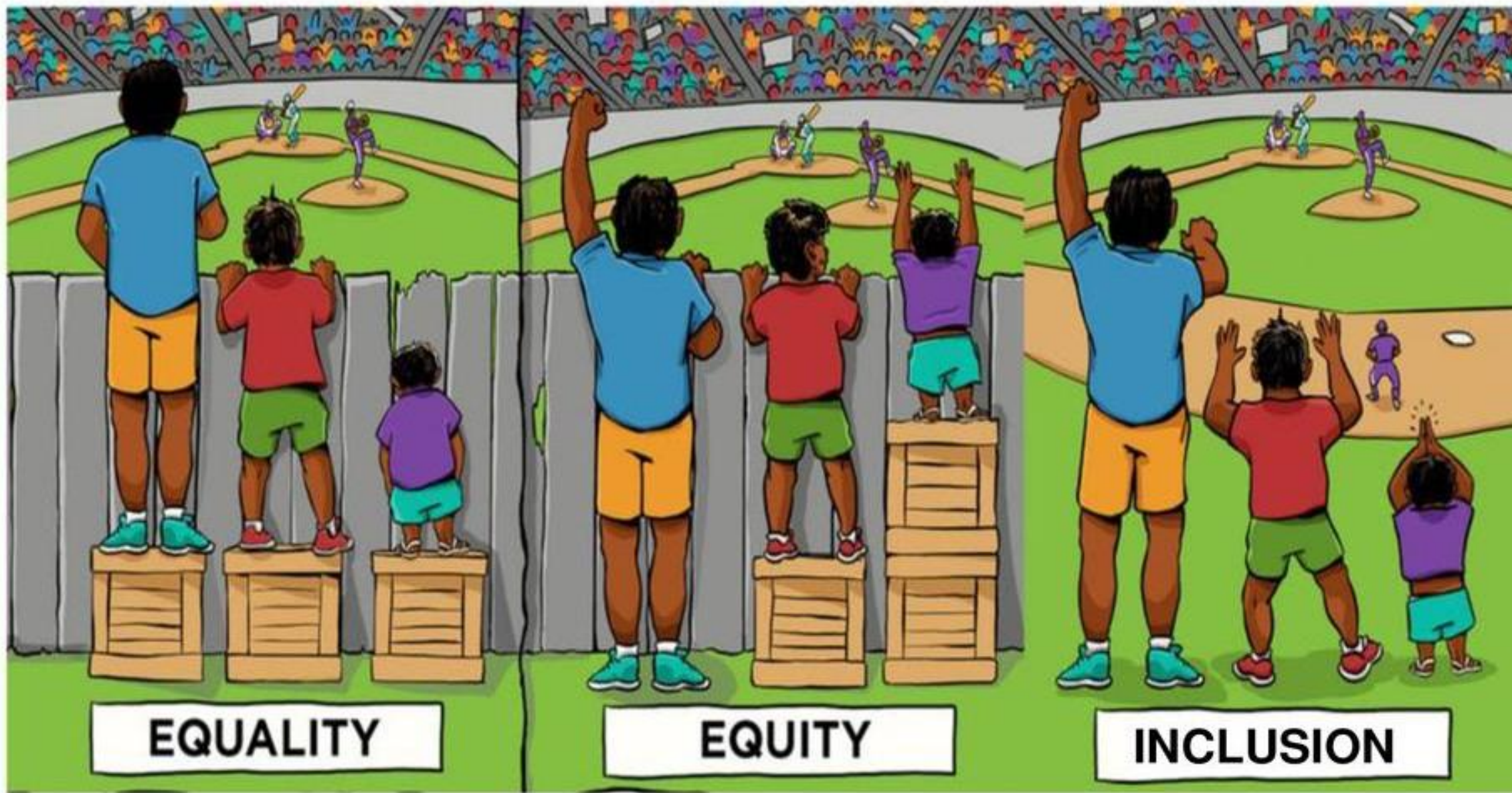




ADULT SOCIAL CARE



Inclusion and diversity Quests

Quest for
race



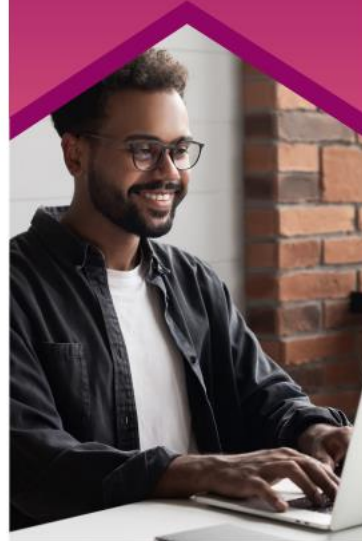
Quest for
disability



Quest for
LGBTQIA+



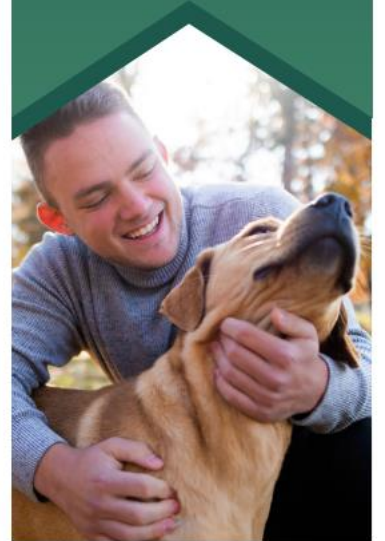
Quest for
**age: first
20 years**



Quest for
**age: last
20 years**



Quest for
**mental
health**



Exploring challenges and opportunities to create positive change for our workforce – led by our employees and supported by our leaders.



What is a Quest?

-
- The Quest programme has been running since 2021 and was introduced as a way of identifying equality, diversity and inclusion issues and opportunities within Adult Social Care (ASC)
 - Since 2021 we have run four Quests starting with Race, then Disability, then LGBTQIA+, and recently the Age Quest. We are currently planning on the Mental Health quest.
 - For each Quest we ask for up to ten volunteers, who are released from their usual duties for five to six weeks. Volunteers are welcome from any team across ASC and all applications are considered alongside the needs of the service
 - The Questers (as they are now known) take this time to investigate and research the issues that are important to both them and ASC colleagues

At the end of the Quest, the Questers present their findings and recommendations to the Adult Leadership team and Corporate Leadership team. They are then supported to implement their recommendations across the service.

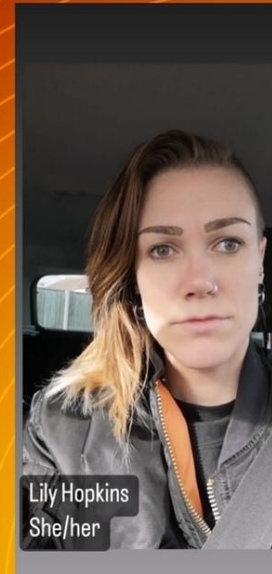


Race Questers, October 2021

Disability Questers



LBTQIA+ Questers



ECC ASC LGBTQIA+ Quest 2022

NEXT STEPS

- More Quests –
 - Mental Health
 - AN Others – March 24
- EDI action plan, developing through our own EDI Steering Group.



Any Questions?

